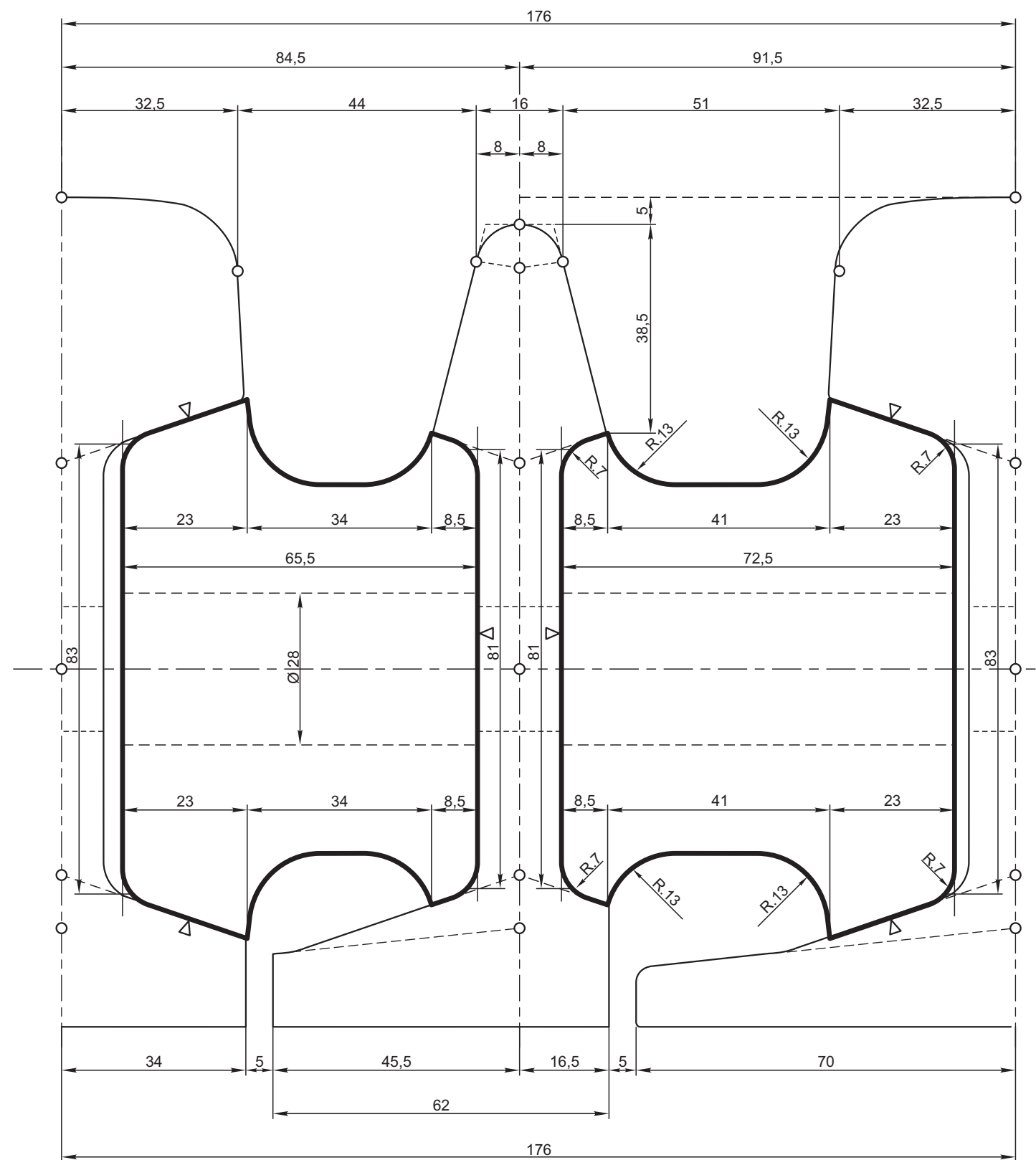
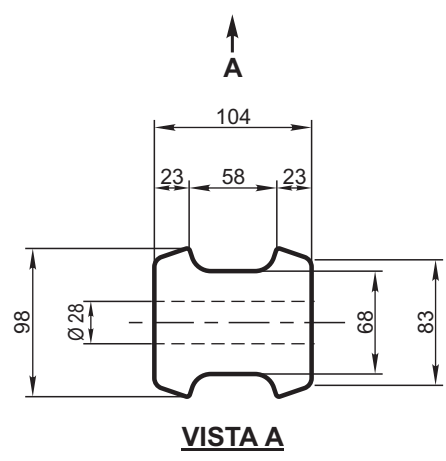
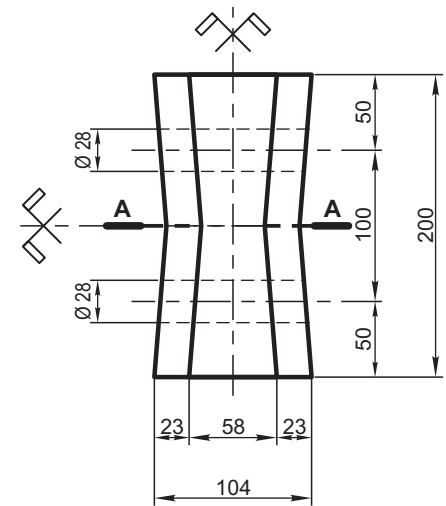
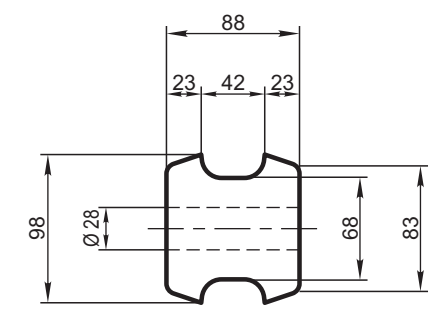


½ PERFIL DE CONTACTO Y ½ PERFIL NORMAL

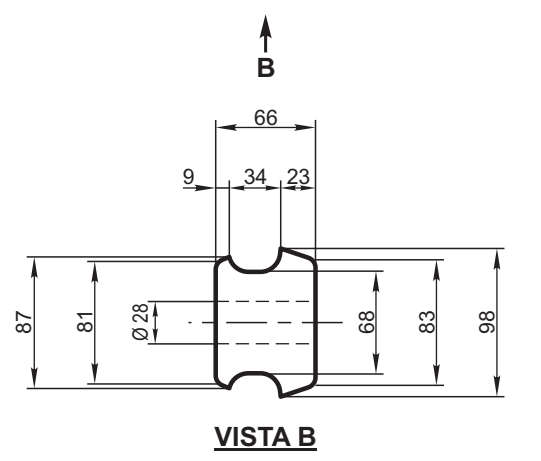
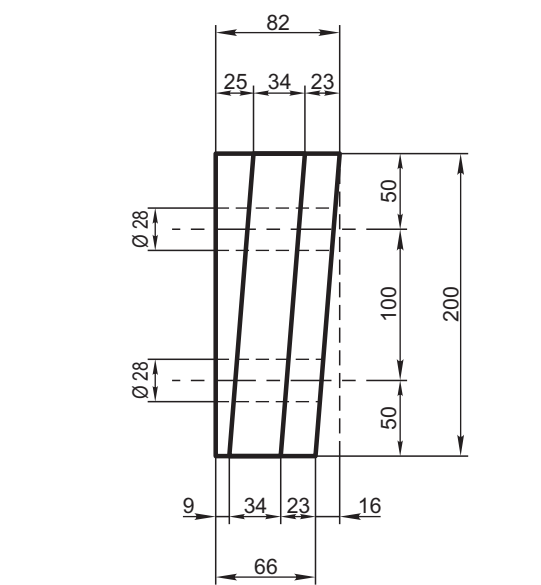
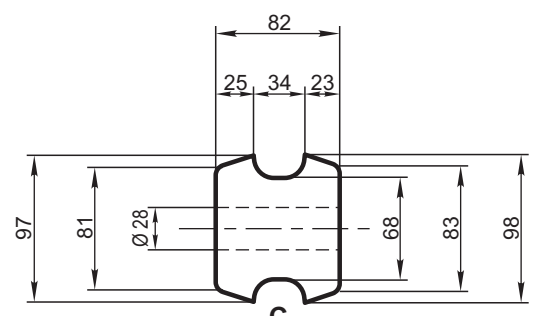
Esc: 1:1



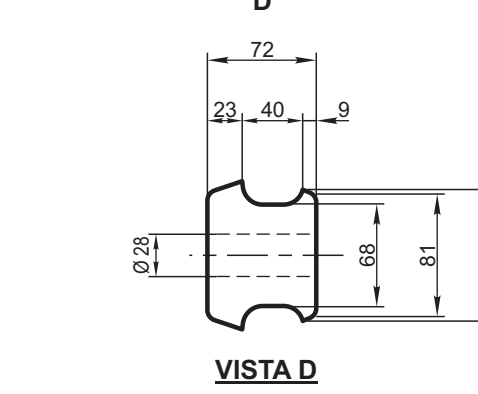
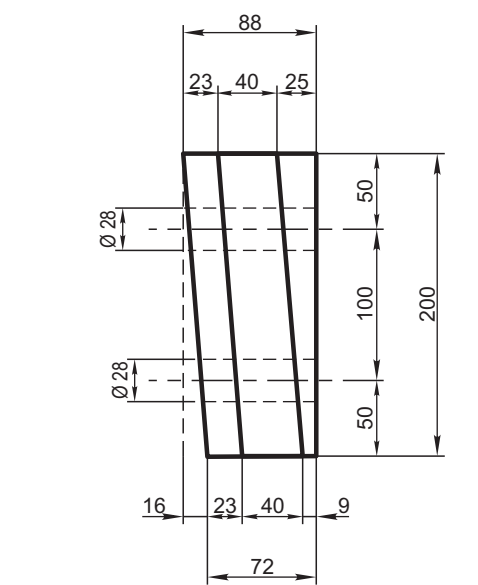
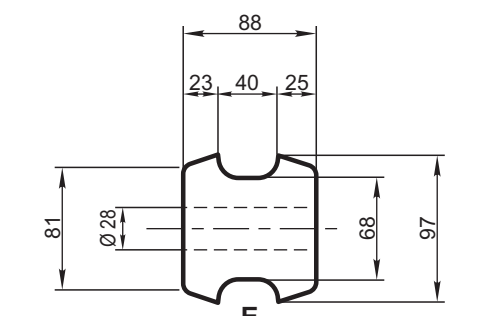
TACO A
Esc: 1:5
CORTE A-A



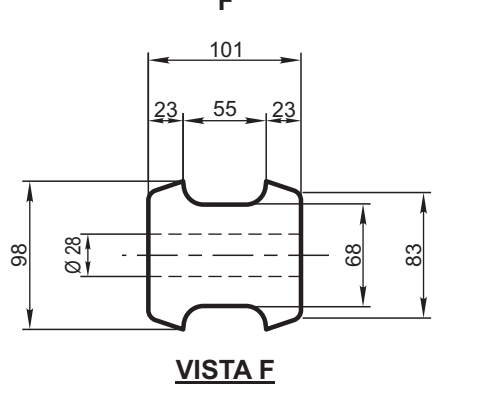
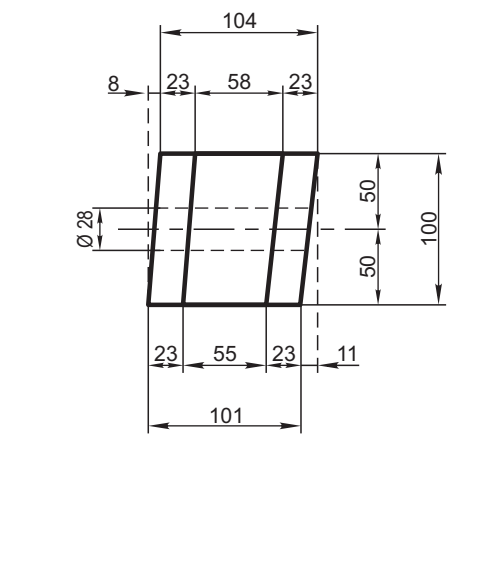
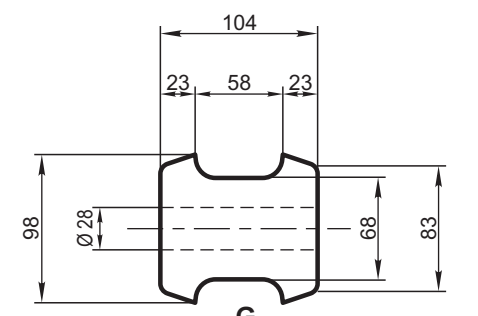
TACO B
Esc: 1:5
VISTA C



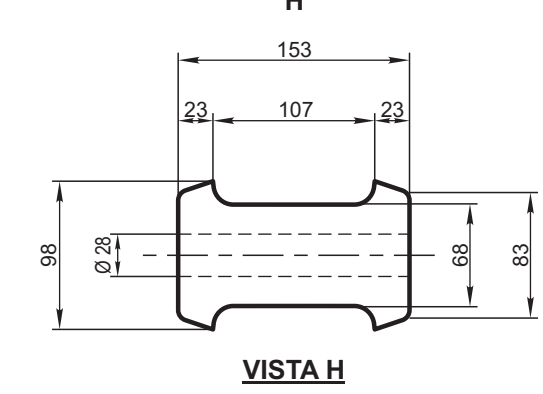
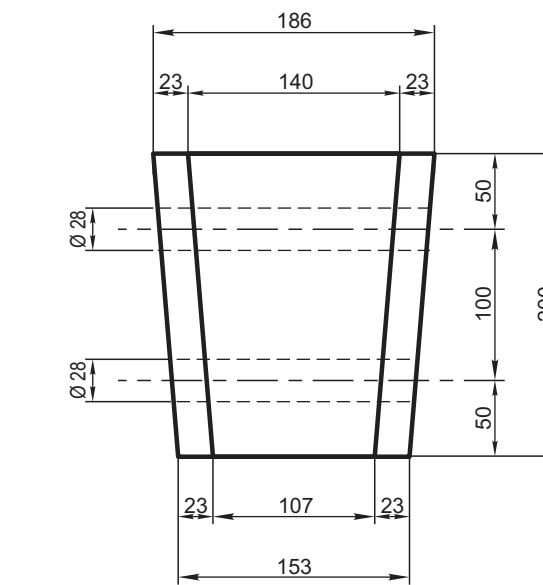
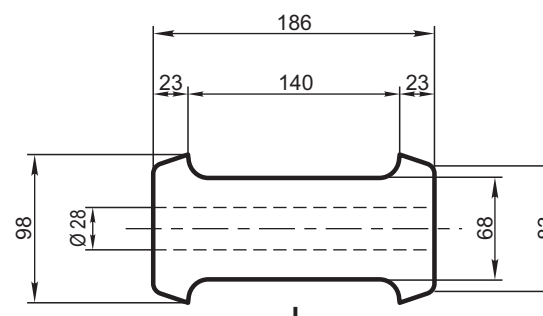
TACO C
Esc: 1:5
VISTA E



TACO D
Esc: 1:5
VISTA G

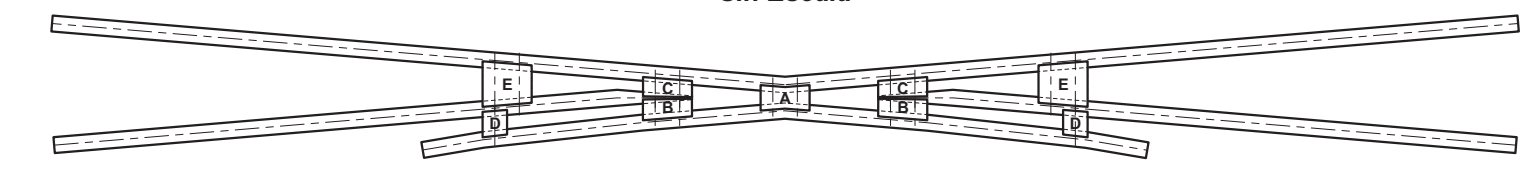


TACO E
Esc: 1:5
VISTA I



ESQUEMA DE DISTRIBUCION DE TACOS

Sin Escala



NOTAS:

- Todas las superficies a maquinar deben estar sobredimensionadas en 1 mm.
- Superficies a maquinar en el armado del corazón.

15	Arandela cuña cuadrada	20	GVO 654 (Cr.9-5-9-3)	SAE 1010
14	Arandela elástica Ø 27	10	GVO 511	F.A. 7 008
13	Bulón de 25 x 400	2	GVO 653 (C.9-9-1-2)	F.A. 7 006
12	Bulón de 25 x 275	2	GVO 653 (C.9-9-1-2)	F.A. 7 006
11	Bulón de 25 x 250	4	GVO 653 (C.9-9-1-2)	F.A. 7 006
10	Bulón de 25 x 200	2	GVO 653 (C.9-9-1-2)	F.A. 7 006
9	Taco de distancia "E"	2	GVO 744 (Cr. 7-6-2-2)	F.A. 8 718
8	Taco de distancia "D"	2	GVO 744 (Cr. 7-6-2-2)	F.A. 8 718
7	Taco de distancia "C"	2	GVO 744 (Cr. 7-6-2-2)	F.A. 8 718
6	Taco de distancia "B"	2	GVO 744 (Cr. 7-6-2-2)	F.A. 8 718
5	Taco de distancia "A"	1	GVO 744 (Cr. 7-6-2-2)	F.A. 8 718
4	Contrarriel longitud 3.000 mm	1	GVO 743 (Cr. 9-7-2-1)	F.A. 7 003
3	Riel punta derecho longitud 2.606 mm	1	GVO 743 (Cr. 9-7-2-1)	F.A. 7 003
2	Riel punta izquierdo longitud 2.606 mm	1	GVO 743 (Cr. 9-7-2-1)	F.A. 7 003
1	Riel ala longitud 6.000 mm	1	GVO 743 (Cr. 9-7-2-1)	F.A. 7 003
REF.	DESCRIPCION	CANT.	PLANO	NORMA/MATERIAL

**CORAZON OBTUSO Tg 1:5,958
TACOS DE DISTANCIA
RIEL U.36**

FERROCARRILES ARGENTINOS
AREA VIA Y OBRAS

ESCALA 1:1 - 1:5	TROCHA TODAS	LINEAS: TODAS	UTILIZACION VIA	EMISION 1 2 3
FIRMA Y FECHA APROB.			N° DE PLANO G.V.O. 744	

3	Nota de sobredimensionamiento	11/12/85
2	Se agregó N° de planos G.V.O.	
EMISION	COTA	ALTERACIONES
		FECHA - FIRMA