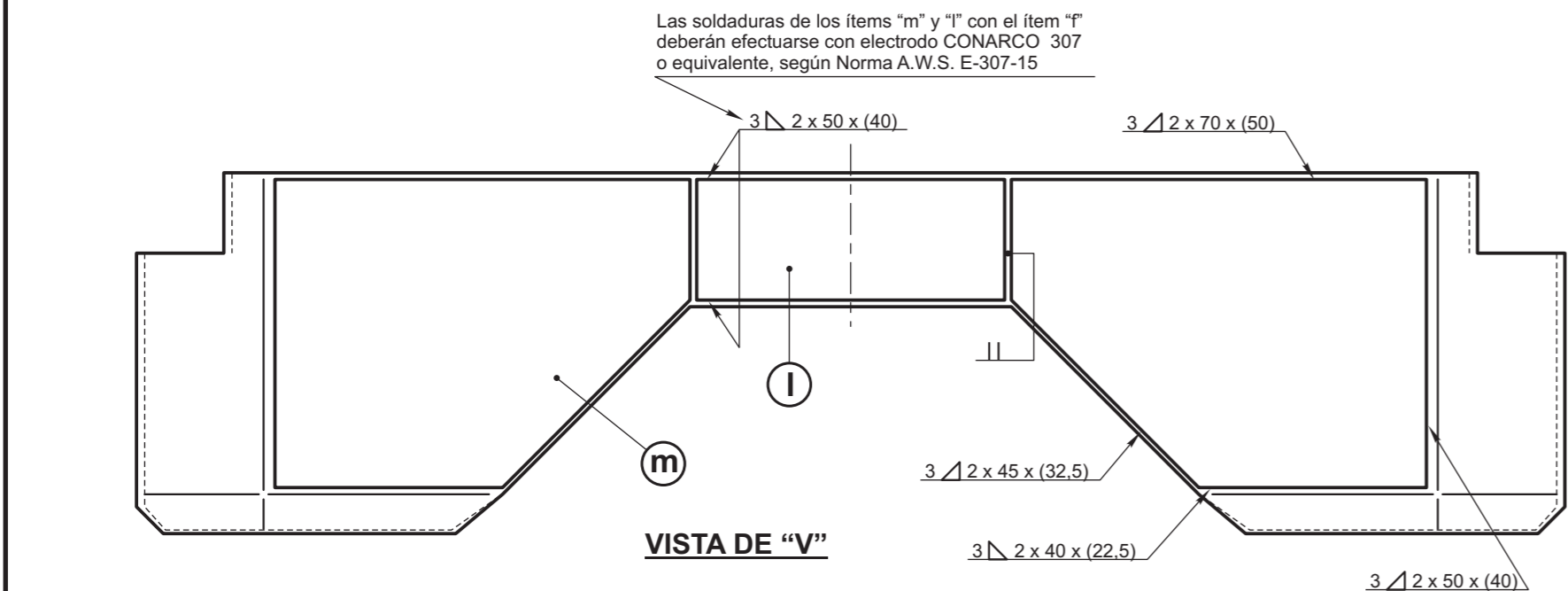
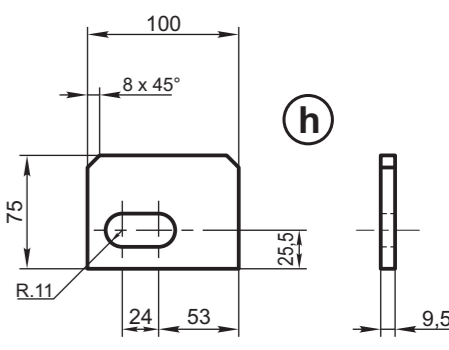
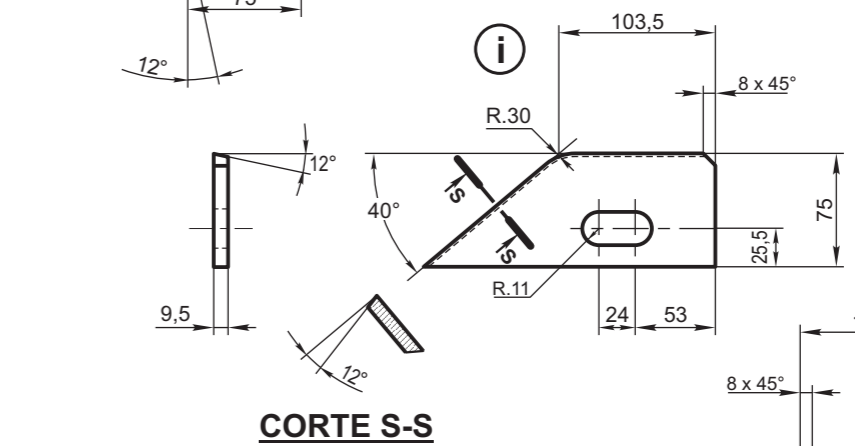
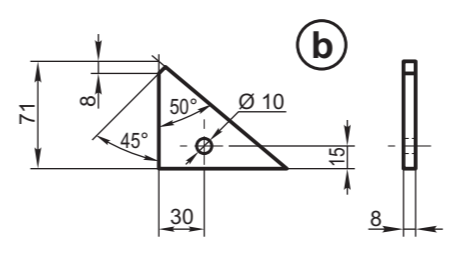
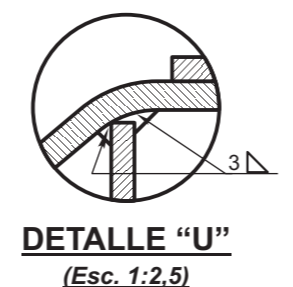
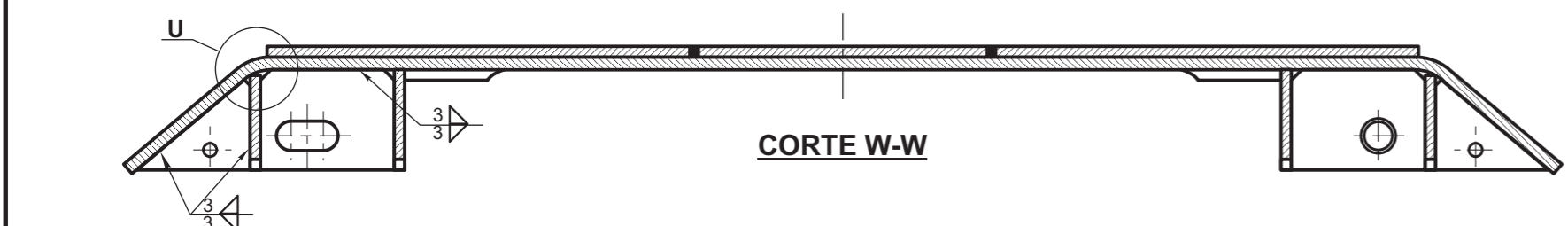
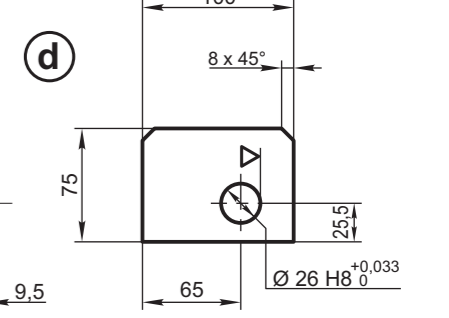
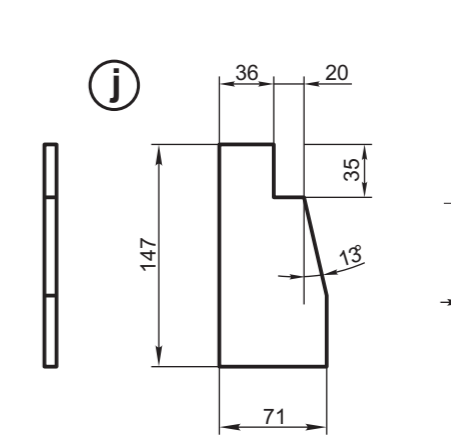
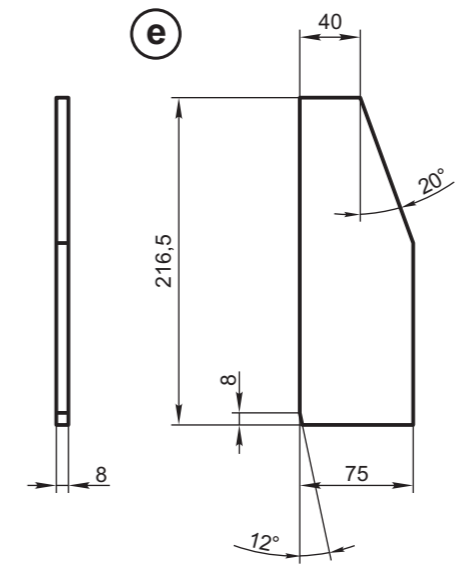
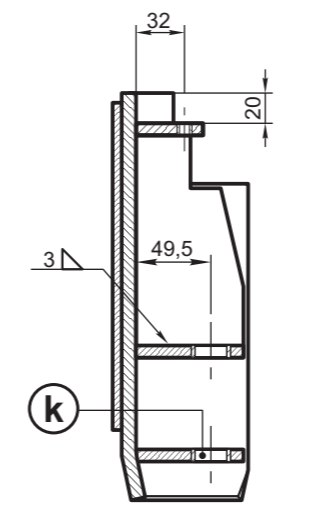
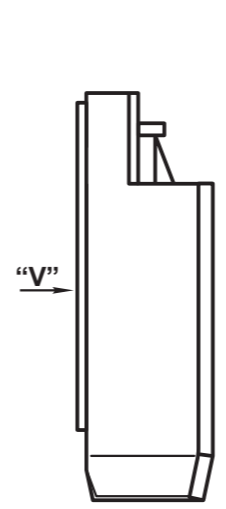
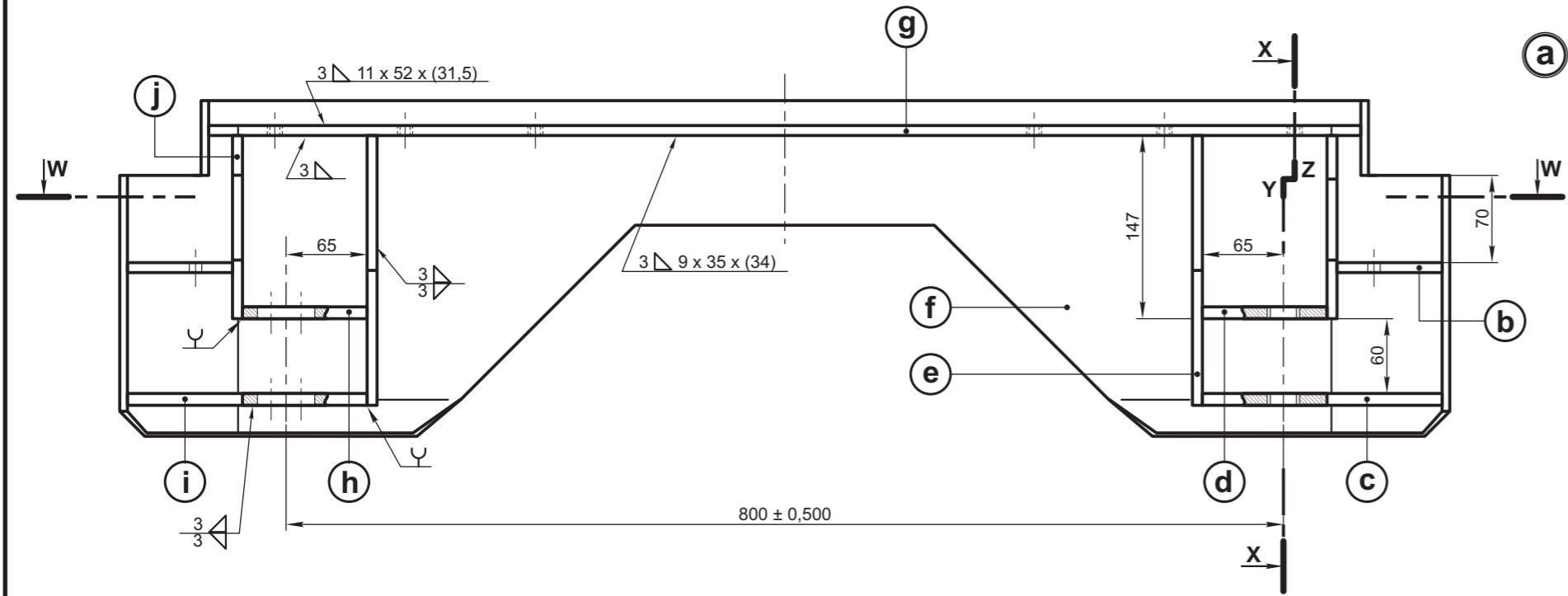


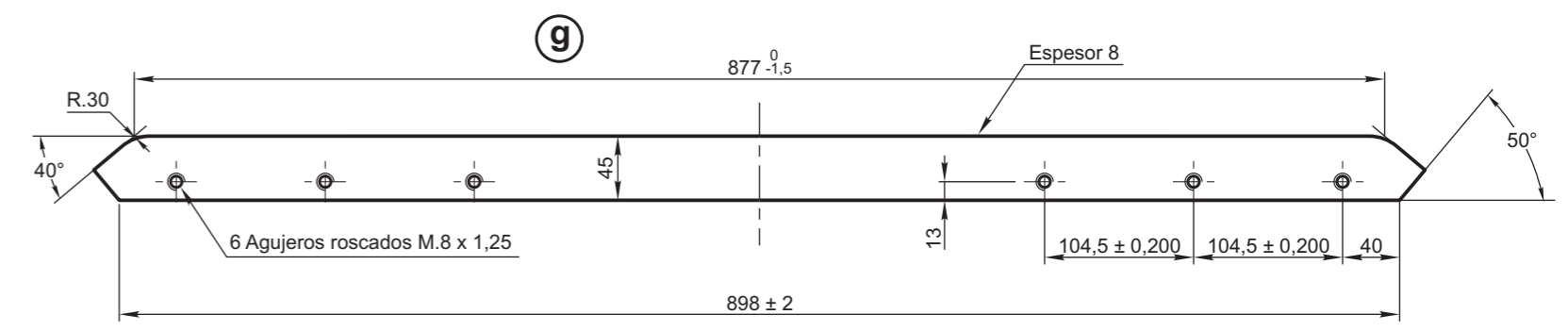
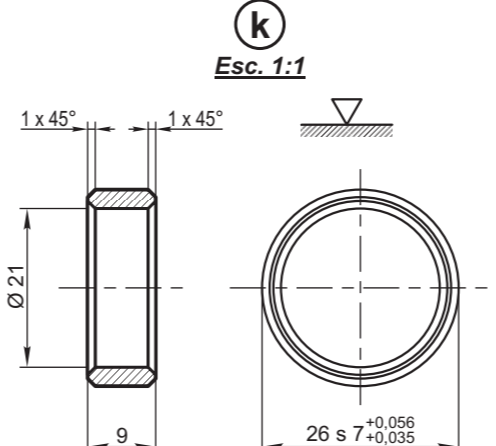
Para símbolos de soldadura ver IRAM 4536  
Tolerancias angulares  $\pm 1^\circ$   
ELIMINAR REBABAS

TOLERANCIAS NO ESPECIFICADAS  
JS.16 = js.16  
IRAM 5002

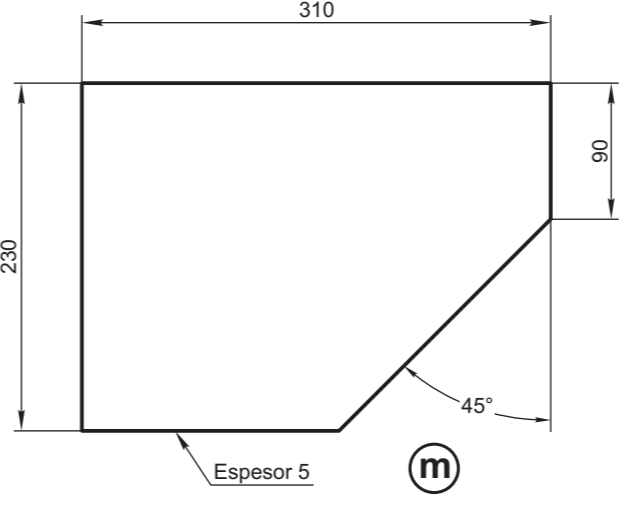
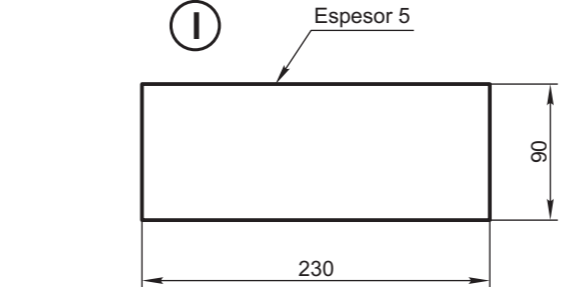
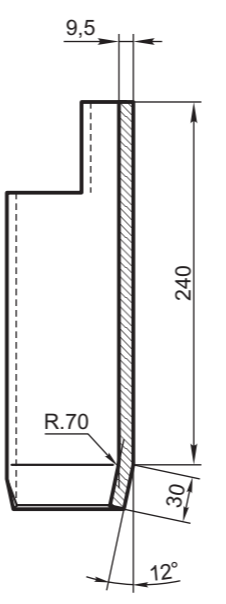
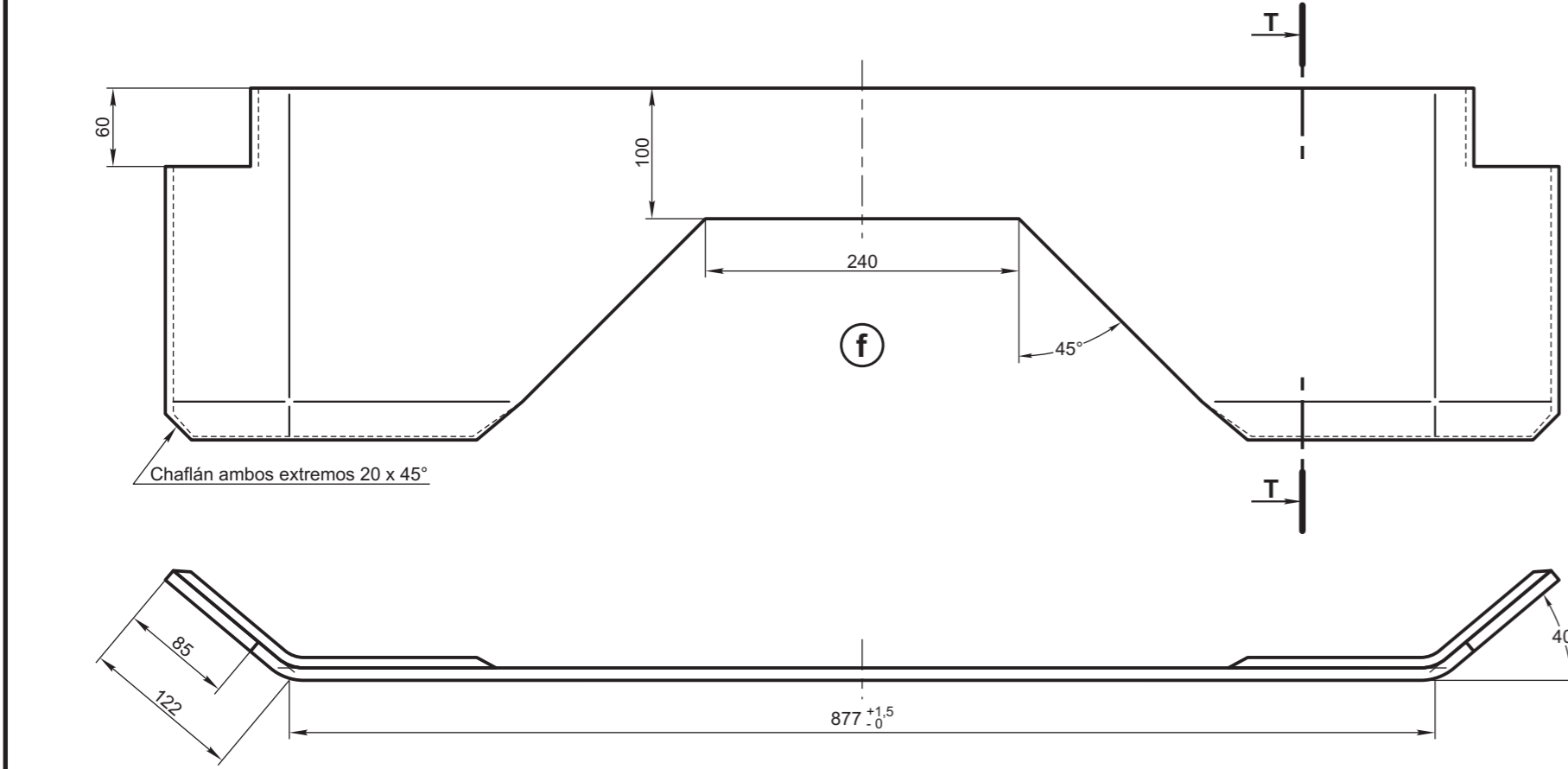
SIMBOLOS DE LABRADO  
IRAM 4517



Las soldaduras de los ítems "m" y "l" con el ítem "f" deberán efectuarse con electrodo CONARCO 307 o equivalente, según Norma A.W.S. E-307-15



NOTA:  
EL CONJUNTO ITEM "a" SE DEBERA ENTREGAR PINTADO DE COLOR NEGRO BRILLANTE, PREVIO UN RECUBRIMIENTO CON PINTURA ANTICORROSIVA ADECUADA.



ES COMPONENTE DEL CONJUNTO DIBUJO NEFA 2-70-3-5021 Y DEL SUBCONJUNTO DIBUJO NEFA 2-70-3-5029.

ITEM	DESCRIPCION	Cant.	ESCUADRIA, ESPECIFICAC. Y OBSERVACIONES	CATAL-NOMEN.
m	Placa de fricción lateral	2	Acero austenítico al manganeso 12% Tipo "HADFIELD"	
l	Placa de fricción central	1		
k	Buje	2	Acero acem. 0,14 IRAM 529 Cement., templ. y revenido - Dureza 53-60 RC - Prof. 0,8 a 1,2 mm	
j	Placa	2	Acero F-22 o F-24 IRAM-IAS U 500 42	
i	Placa	1		
h	Placa	1		
g	Placa	1		
f	Chapón frontal	1		
e	Placa	2		
d	Placa	1		
c	Placa	1		
b	Placa	2		
a	Soporte de pasarela móvil			2/70/3/16/1329/0

**SOPORTE FUELLES "BOURRELET"**

**FERROCARRILES ARGENTINOS**

AREA MECANICA

ESCALA 1:5	TROCHA 1676	LINEAS: SAN MARTIN	UTILIZACION COCHES MATERFER	EMISION 1
FIRMA Y FECHA APROB.			N° DE PLANO <b>NEFA 2-70-3-5031</b>	