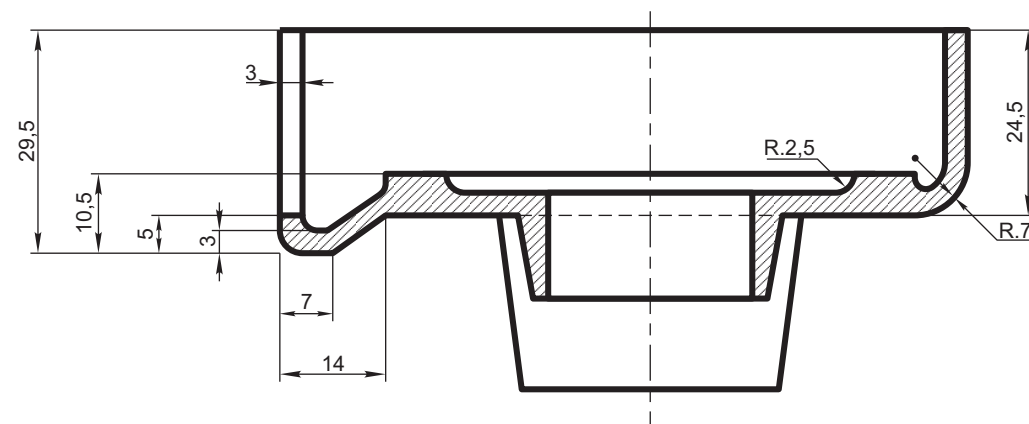



Technical drawing of the front view of a rectangular metal plate. The overall width is 129,5. The overall height is 88 ± 0,3. The distance from the top edge to the center of the top circular feature is 73 ± 0,3. The distance from the bottom edge to the center of the bottom circular feature is 19. The top circular feature has a diameter of 24 and a central hole with a diameter of 14. The bottom circular feature has a diameter of 19 and a central hole with a diameter of 14. The plate has rounded corners and a central vertical slot.



Referencia Fábrica: 9.75.104 - 1301627

| | | | | |
|--|---|----------------|---|--|
| | Caja para cerradura derecha | | Aluminio Al-Si 12 - IRAM 681 | 2/70/2/27/0185/0 |
| ITEM | DESCRIPCION | Cant. | ESCUADRIA, ESPECIFICAC. Y OBSERVACIONES | CATAL-NOMEN. |
| <div>CAJA PARA CERRADURA</div> <div>PUERTA DE ACCESO</div> | | | | <div>FERROVIALES</div> <div>ARGENTINOS</div> |
| | | | | <div>AREA</div> <div>MECANICA</div> |
| ESCALA 1:2,5 |  | TROCHA 1676 | LINEAS: SAN MARTIN | UTILIZACION COCHES MATERFER DORMITORIO |
| FIRMA Y FECHA APROB. | | | N° DE PLANO | |
| | | | NEFA 2-70-2-5002 | |
| | | | 1 | |
| | | | | |