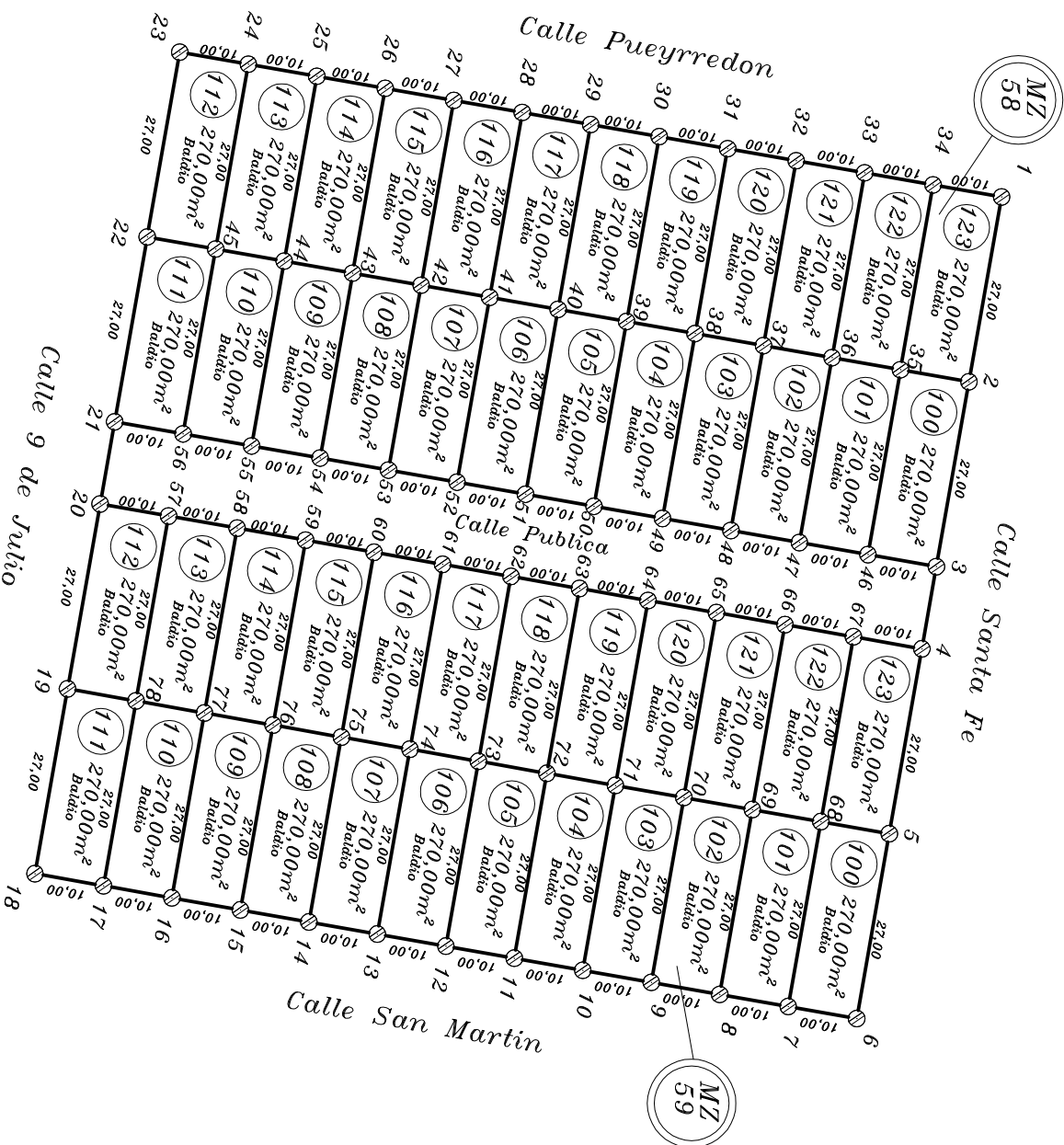


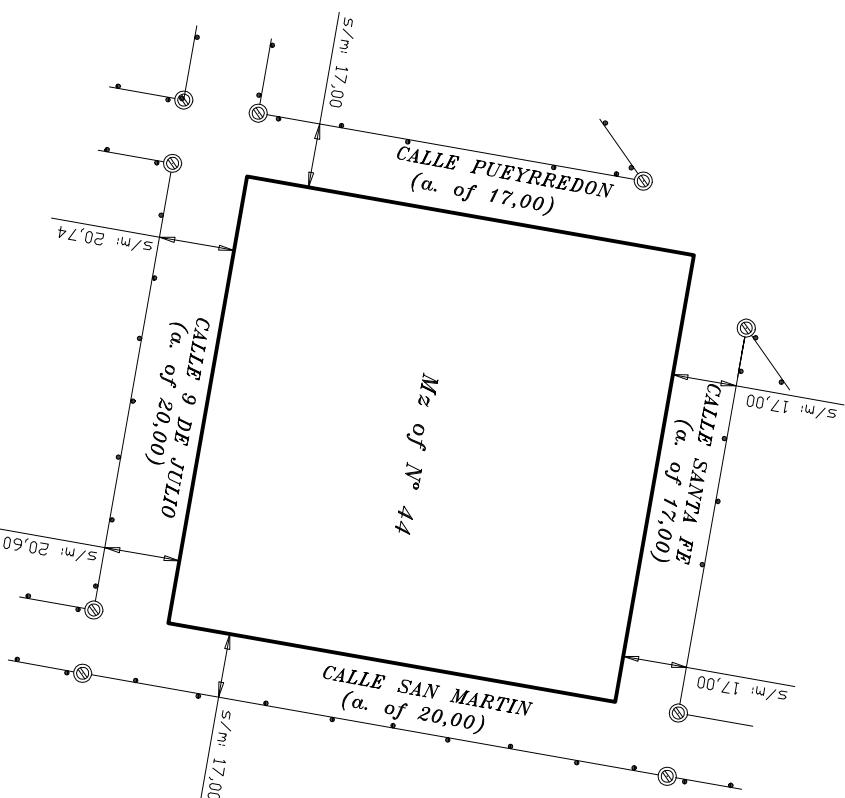
MENSURA, UNION Y SUBDIVISION

MENSURA, UNION Y SUBDIVISION

Foja:



CROQUIS DE UBICACION



CROQUIS S/TITULO

| | | | | | |
|------------------------|------------------------|------------------------|------------------------------|-----------------------|-----------------------|
| LOTE A1 sup:800 m2 | LOTE B1 sup:800 m2 | LOTE D1 sup:1200 m2 | | LOTE A2 sup:800 m2 | LOTE B2 sup:800 m2 |
| LOTE C13 sup:800 m2 | LOTE D2 sup:1200 m2 | | MZ 44 LOTE D2 sup:1200 m2 | LOTE A3 sup:800 m2 | LOTE B3 sup:800 m2 |
| LOTE D3 sup:1200 m2 | LOTE D4 sup:1200 m2 | | LOTE C3 sup:800 m2 | LOTE A4 sup:800 m2 | LOTE B4 sup:800 m2 |

MUNICIPALIDAD DE CINTRA

Plano de: **MENSURA, UNION Y SUBDIVISION** Folja:

Titular Registral:

S/TITULOS S/CATASTRO

| S/TITULOS | | S/CATASTRO | | NOMENCLATURA CATASTRAL | |
|-----------|--------|-----------------------------------------------------------------------------|-----------------------------|------------------------|-----------|
| Dep: | UNION | UNION | Dep: 36 | Provincial | Municipal |
| Ped: | LITIN | LITIN | Ped: 01 | | |
| Munic: | CINTRA | CINTRA | Pblo: 08 | | |
| Lugar: | CINTRA | | C: 01 | | |
| | | | S: 01 | | |
| | | | M: 011 | | |
| | | | P: 017 | | |
| Manzana: | 44 | Lotes: D1, A3, D2, B3, B4, D1, C2, B1, A2, C1, C3, C4, A4, A1, B2, D3, y C4 | Calle: Santa Fe, San Martin | M: 011 | M: 011 |
| | | | 9 de Julio y Pueyrredon | P: 017 | P: 017 |

| DOMINIO | Maticula F/R | N° | Propiedad N° |
|---------|--------------|--------------|-----------------|
| | 353.007 (D4) | 353.001 (A2) | 36.01.1556022/7 |
| | 353.009 (A3) | 353.012 (C1) | 36.01.1556024/3 |
| | 353.003 (D2) | 353.006 (C3) | 36.01.1556023/5 |
| | 353.010 (B3) | 353.005 (A4) | 36.01.1556018/9 |
| | 353.006 (B4) | 353.997 (A1) | 36.01.1556025/1 |
| | 352.299 (D1) | 353.002 (B2) | 36.01.1556021/9 |
| | 353.000 (C2) | 353.011 (D3) | 36.01.1556014/6 |
| | 352.998 (B1) | 353.004 (C4) | 36.01.1556015/4 |
| | | | 36.01.1556013/8 |
| | | | 36.01.1556016/2 |
| | | | 36.01.1556028/5 |
| | | | 36.01.1556020/1 |
| | | | 36.01.1556017/1 |
| | | | 36.01.1556026/0 |
| | | | 36.01.1556019/7 |
| | | | 36.01.1556012/0 |
| | | | 36.01.1556013/8 |

Antecedentes Relacionados : Plano de la Localidad de Cintra y Parcelario C.01-S.01-MZ.011 archivados en la Direc.Gral de Catastro Delegacion N° 15

Observaciones : Los ángulos no indicados miden 90° 00'. Las medidas lineales están expresadas en metros.

Certifico haber realizado y amojonado el trabajo en el terreno, finalizando las operaciones con fecha 4-2-2021

TITULAR

PROFESIONAL

Exp. Prov:

Fecha de Visación: