

SUITE FOR TUBA

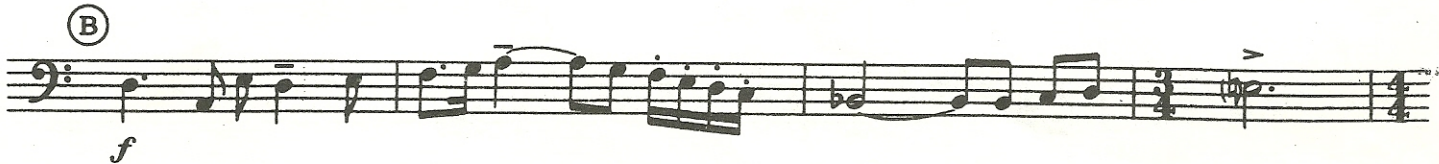
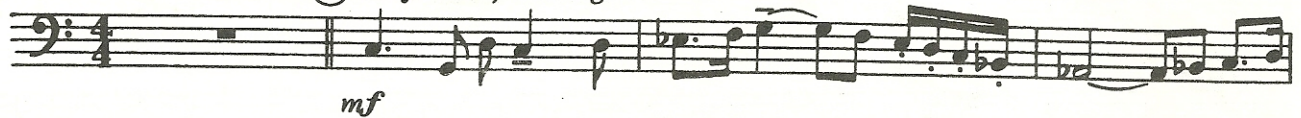
Tuba

1. ALLEGRO MAESTOSO

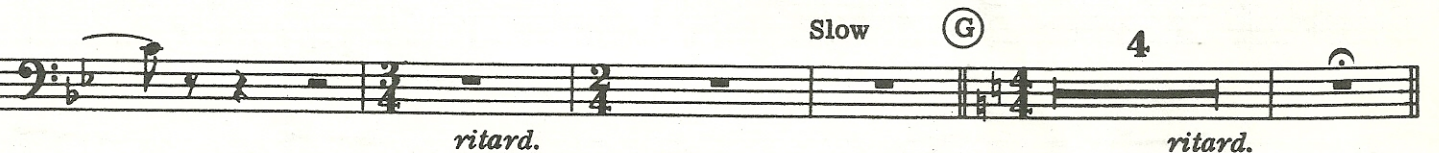
DON HADDAD

Allegro maestoso (♩ = c.132-138)

(A) Rhythmic, but legato



(E) Adagio (♩ = c.66-72)



Copyright © 1966 Templeton Publishing

A Division of Shawnee Press, Inc.

International Copyright Secured All Rights Reserved

SOLE SELLING AGENT: SHAWNEE PRESS, INC.,

COPYING IS ILLEGAL

(H) Allegro (♩ = c.144)

2 *marcato*

f

(I) *espress.*

(J) Più mosso

ritard. sub. p

Broad

ff molto ritard.

2. ANDANTE ESPRESSIVO

Andante (A)
 espressivo (♩. = c.72)

mp dolce

(B)

(9) (C) *p cresc.*

dim. 1st time To (D)

2nd time (D) 4 p

Fine (E) mf

ritard.

Broad

f ritard. e dim. p

D.S. ((A)) al Fine

3. ALLEGRO CON BRIO

Allegro con brio
(♩ = c.144-152)

4 (A) smoothly mf

1.

2. (B) Legato e dolce mp

(C)

p cresc.

(D) f cresc. ff

Tuba

Cadenza ad lib.